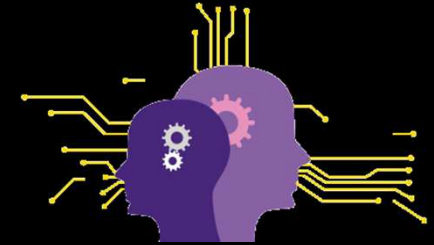


Barriers for AI Development



Sana Ben Jemaa

Orange Labs Chatillon, France



Orange Expert
Future
networks

OLFAI

September 16, 2019

AI for Radio Access Networks

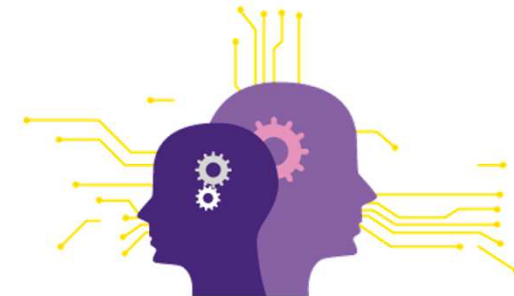
Test and learn internally and with our partners

Mid-term activity:

- Trials with RAN suppliers and with start-ups
- Development of AI RAN management features in-house
- Collaboration with operational teams in Orange affiliate

Research activity: internal research, collaborative projects and partnerships

- How to learn online efficiently?
- How to predict accurately (both in time and space)?
- How to build a RAN which is AI capable by design ?



Knowledge
Building

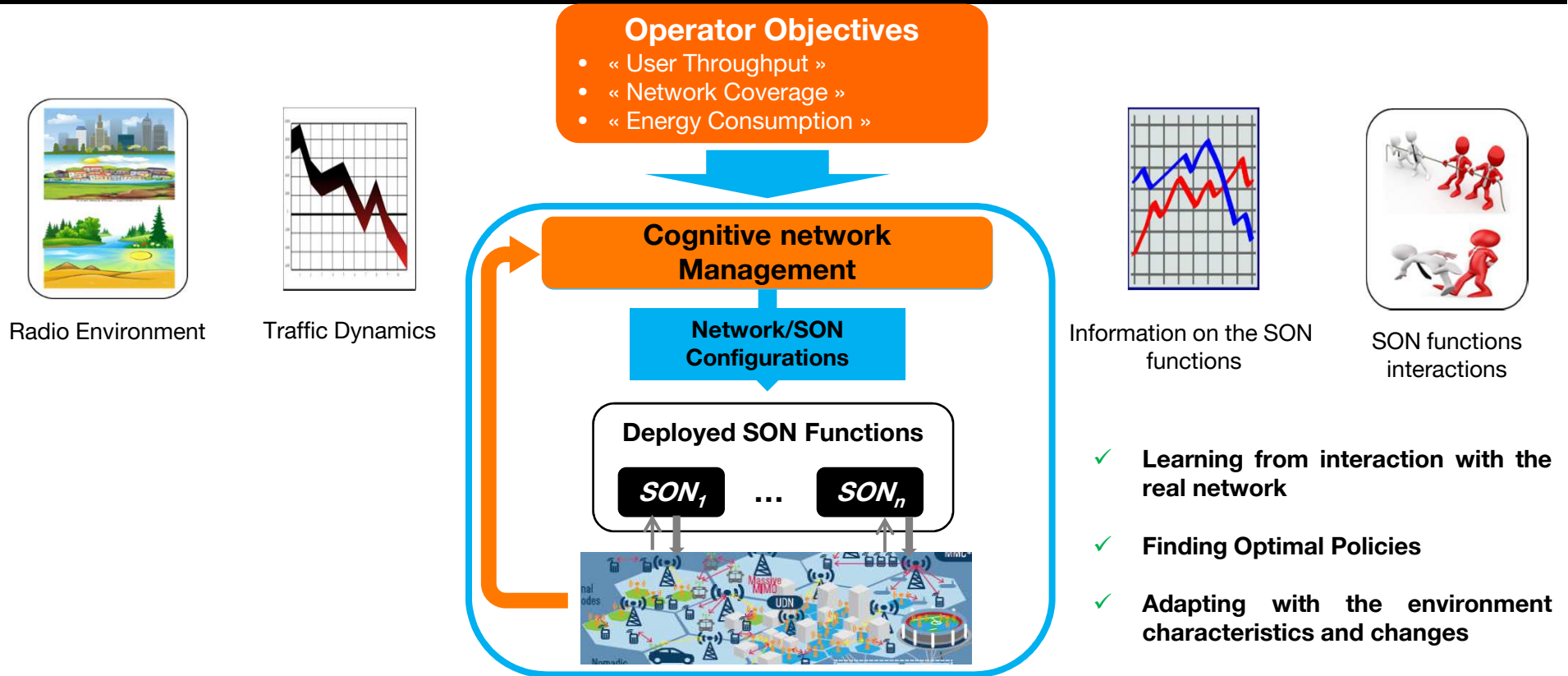


Decision
support



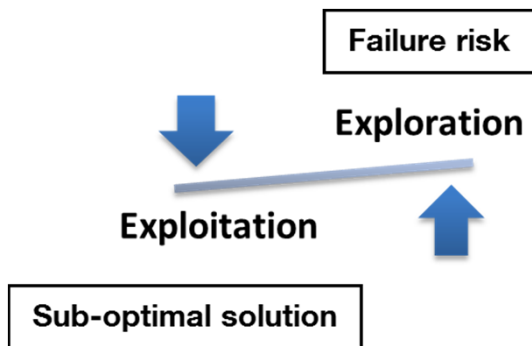
Online
Decision

Cognitive RAN management use case



Cognitive RAN management use case

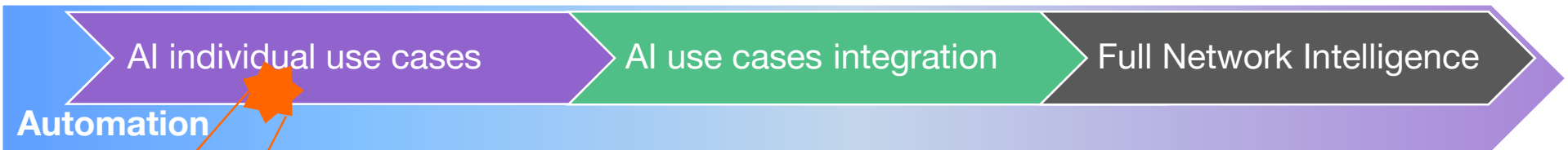
Towards an operational implementation



- ✓ Pre-training: using simulations, historic data and human expertise to avoid building strategies from scratch
- ✓ Collaborative learning and Knowledge transfer to speed the convergence and limit exploration
- ✓ Control performance degradation and ability to rollback

Tight collaboration between radio engineers and AI scientists is crucial

Barriers for AI development



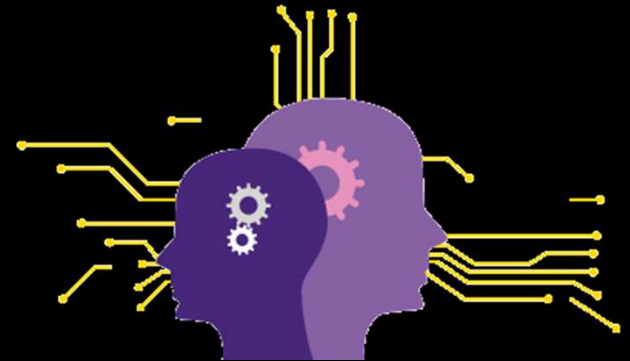
Availability and Quality of data

Skills: multi-disciplinary teams including network engineers and AI scientists

Trust and adoption: technical maturity and cultural change



Thank you!



contact:sana.benjema@orange.com