

# Meeting of the LF AI & Data Technical Advisory Council (TAC)

May 18, 2023

 LF AI & DATA

# Antitrust Policy

- › Linux Foundation meetings involve participation by industry competitors, and it is the intention of the Linux Foundation to conduct all of its activities in accordance with applicable antitrust and competition laws. It is therefore extremely important that attendees adhere to meeting agendas, and be aware of, and not participate in, any activities that are prohibited under applicable US state, federal or foreign antitrust and competition laws.
- › Examples of types of actions that are prohibited at Linux Foundation meetings and in connection with Linux Foundation activities are described in the Linux Foundation Antitrust Policy available at <http://www.linuxfoundation.org/antitrust-policy>. If you have questions about these matters, please contact your company counsel, or if you are a member of the Linux Foundation, feel free to contact Andrew Updegrove of the firm of Gesmer Undergone LLP, which provides legal counsel to the Linux Foundation.

# Recording of Calls

## Reminder:

TAC calls are recorded and available for viewing on the [TAC Wiki](#)

# Reminder: LF AI & Data Useful Links

- › Web site: [lfaidata.foundation](https://lfaidata.foundation)
- › Wiki: [wiki.lfaidata.foundation](https://wiki.lfaidata.foundation)
- › GitHub: [github.com/lfaidata](https://github.com/lfaidata)
- › Landscape: <https://landscape.lfaidata.foundation> or <https://l.lfaidata.foundation>
- › Mail Lists: <https://lists.lfaidata.foundation>
- › Slack: <https://slack.lfaidata.foundation>
- › Youtube: <https://www.youtube.com/channel/UCfasaeqXJBCAJMNO9HcHfbA>
- › LF AI Logos: <https://github.com/lfaidata/artwork/tree/master/lfaidata>
- › LF AI Presentation Template: [https://drive.google.com/file/d/1eiDNJvXCqSZHT4Zk\\_-czASlz2GTBRZk2/view?usp=sharing](https://drive.google.com/file/d/1eiDNJvXCqSZHT4Zk_-czASlz2GTBRZk2/view?usp=sharing)
  
- › Events Page on LF AI Website: <https://lfaidata.foundation/events/>
- › Events Calendar on LF AI Wiki (subscribe available): <https://wiki.lfaidata.foundation/pages/viewpage.action?pageId=12091544>
- › Event Wiki Pages: <https://wiki.lfaidata.foundation/display/DL/LF+AI+Data+Foundation+Events>

# Agenda

- › Roll Call (1 mins)
- › Approval of Minutes from previous meeting (2 mins)
- › Vote on the project lifecycle doc (2 mins)
- › Resilience from XPRIZE proposed new sandbox project review (40 minutes)
- › Open Discussion

# TAC Voting Members - Please note

Please ensure that you do the following to facilitate smooth procedural quorum and voting processes:

- Change your Zoom display name to include your First/Last Name, Company/Project Represented
  - example: Nancy Rausch, SAS
- State your First/Last Name and Company/Project when submitting a motion
  - example: First motion, Nancy Rausch/SAS

# TAC Voting Members - Please note

- › TAC members must attend consistently to maintain their voting status
- › After 2 absences voting members will lose voting privileges
- › Voting privileges will only be reinstated after attending 2 meetings in a row

# TAC Voting Members

Note: we still need a few designated backups specified on [wiki](#)

with the new attendance and voting rule adopted by the TAC, the number of eligible voting members varies per week and is tracked [here](#). Please see meeting minutes on the [TAC wiki](#) to

Member Company or Graduated Project	Membership Level or Project Level	Voting Eligibility	Country	TAC Representative	Designated TAC Representative Alternates
4paradigm	Premier	Voting Member	China	Zhongyi Tan	
Baidu	Premier	Voting Member	China	Jun Zhang	Daxiang Dong, Yanjun Ma
Ericsson	Premier	Voting Member	Sweden	Rani Yadav-Ranjan	
Huawei	Premier	Voting Member	China	Howard (Huang Zhipeng)	Charlotte (Xiaoman Hu), Leon (Hui Wang)
Nokia	Premier	Voting Member	Finland	@ Michael Rooke	@ Jonne Soininen
OPPO	Premier	Voting Member	China	Jimmy (Hongmin Xu)	
SAS	Premier	Voting Member	USA	*Nancy Rausch	JP Trawinski
ZTE	Premier	Voting Member	China	Wei Meng	Liya Yuan
Adversarial Robustness Toolbox Project	Graduated Technical Project	Voting Member	USA	Beat Buesser	Kevin Eykholt
Angel Project	Graduated Technical Project	Voting Member	China	Jun Yao	
Egeria Project	Graduated Technical Project	Voting Member	UK	Mandy Chessell	Nigel Jones, David Radley, Maryna Strelchuk, Ljupcho Palashevski, Chris Grote
Flyte Project	Graduated Technical Project	Voting Member	USA	Ketan Umare	
Horovod Project	Graduated Technical Project	Voting Member	USA	Travis Addair	
Milvus Project	Graduated Technical Project	Voting Member	China	Xiaofan Luan	Jun Gu
ONNX Project	Graduated Technical Project	Voting Member	USA	Alexandre Eichenberger	Andreas Fehlner, Prasanth Pulavarthi, Jim Spohrer
Pyro Project	Graduated Technical Project	Voting Member	USA	Fritz Obermeyer	



# Minutes approval

# Approval of May 4, 2023 Minutes

Draft minutes from the May 4 TAC call were previously distributed to the TAC members via the mailing list

## **Proposed Resolution:**

- › That the minutes of the May 4 meeting of the Technical Advisory Council of the LF AI & Data Foundation are hereby approved.

# Project Lifecycle Document approval

# Approval of Project Lifecycle Document

## **Proposed Resolution:**

- › The Project Lifecycle document for LF AI & Data Foundation is approved.

## **Note:**

- › All changes have been incorporated
- › Link: [https://docs.google.com/document/d/1VFoMcXIbOKa4cqTLkaWX-8\\_7-uh11hZT3b6p0wvjUHM/edit#heading=h.gjdgxs](https://docs.google.com/document/d/1VFoMcXIbOKa4cqTLkaWX-8_7-uh11hZT3b6p0wvjUHM/edit#heading=h.gjdgxs)

**Resilience**

**XPRIZE**

**amir@bayspring.com**

**OLFAI & DATA**

# Project Resilience

---

A Platform to Inform and Help Tackle  
Global Decision-Augmentation Problems

Project Summary

May 2023



# Agenda

Project Mandate and History

Platform Outline

State of MVP

Architecture

Vision for Final Platform

Call for Help and Contribution

# Contribution to Linux Foundation

## Project Statement

### **Neutral Holding**

- Global, not for profit
- Partnered with a UN agency, ITU

### **Open governance model**

- Transparent and open governance model
- Instill trust in contributors and adopters in the design of the project and assets
- Neutral management of projects' assets by the foundation

### **Growing community opportunity**

- Increase visibility of project through LF ecosystem
- Opportunities to collaborate with other hosted Climate projects



# PROJECT RESILIENCE

A GLOBAL COLLABORATION FOR AN OPEN AND  
PUBLICLY AVAILABLE SERIES OF CLOUD BASED AI  
PREDICTORS and Prescription tools



# Project Resilience Goals



A platform to enable collaboration on building predictive and prescriptive models that can be used by any community



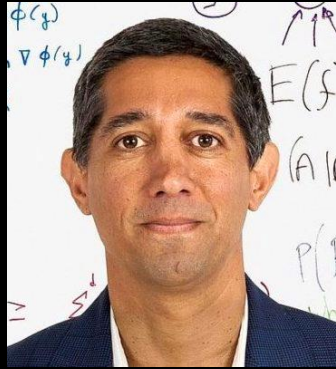
A platform to inform and help tackle global decision-augmentation problems.



Identifying data and guidelines to support sustainable models.



Focus on multi stakeholders and variety of users globally



Babak Hodjat



Risto Miikkulainen



Jennifer Stave

# The Team



Olivier Francon



Amir Banifatemi

# Initial validation: Collaboratively Tackling the Pandemic



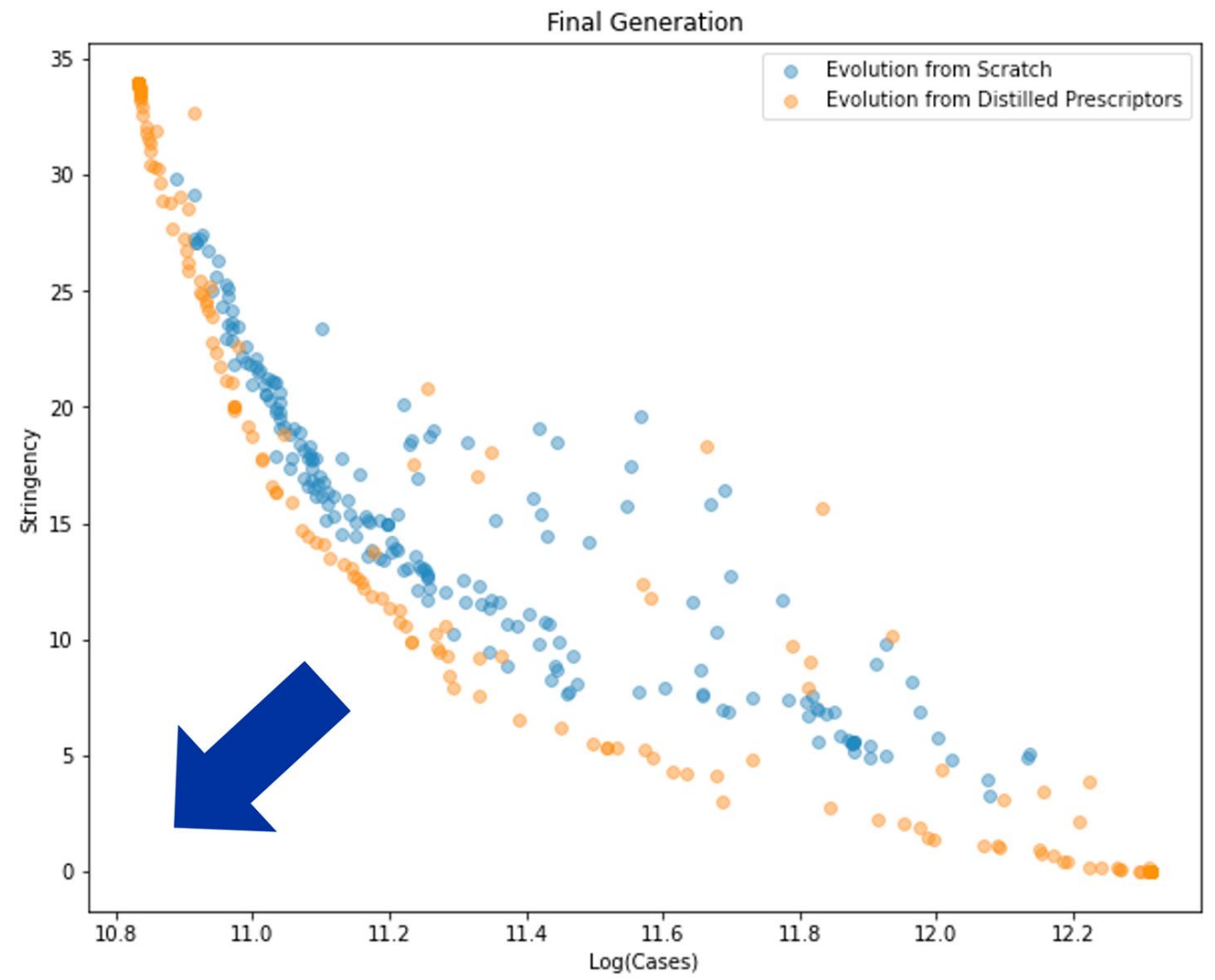
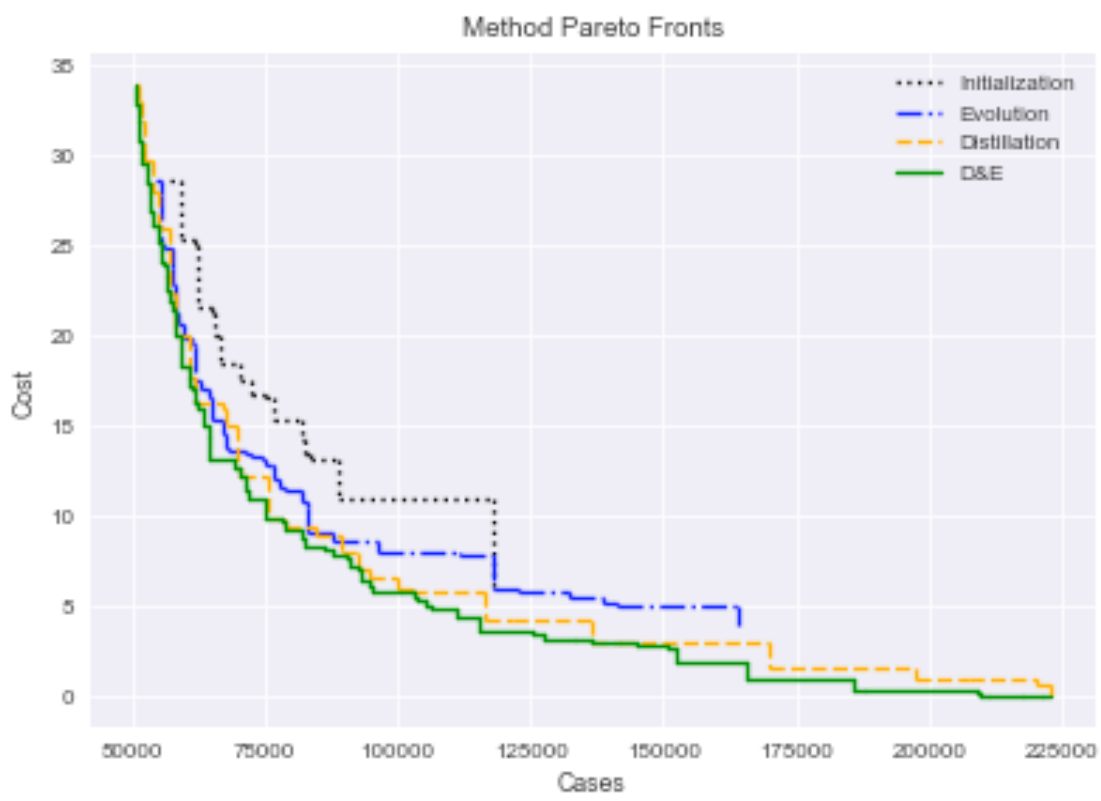
An xprize competition:  
104 Data Science Teams  
From 28 Countries  
Global and Regional Data and Models

## Needed:

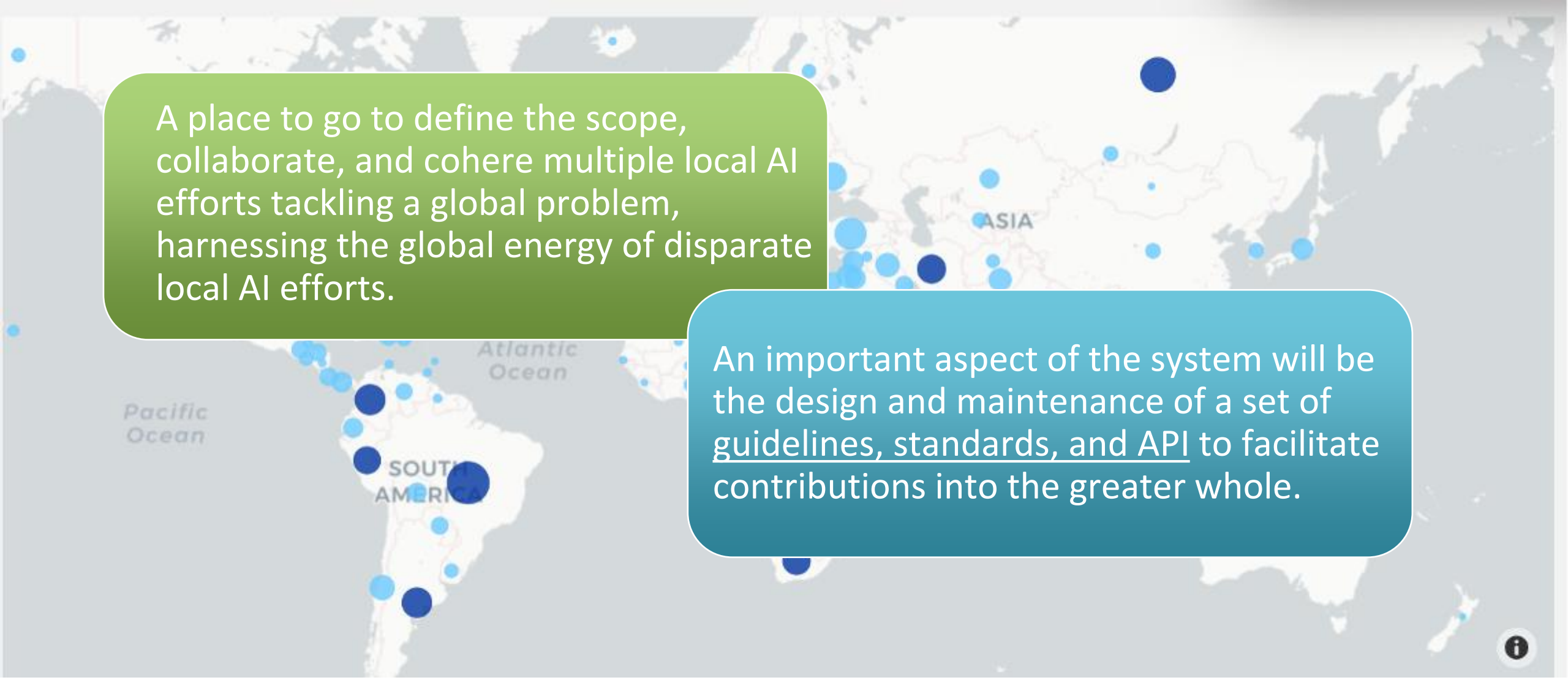
- A place to collaborate
- Interoperability and Standards
- More useful Dataset built from contributed data
- More useful Models built from contributed models

<https://evolution.ml/demos/npidashboard/>

# Collaborative Models are Better Together!



# Next step: Project Resilience Platform in other domain



A place to go to define the scope, collaborate, and cohere multiple local AI efforts tackling a global problem, harnessing the global energy of disparate local AI efforts.

An important aspect of the system will be the design and maintenance of a set of guidelines, standards, and API to facilitate contributions into the greater whole.

# Project Status

Current working group started in **Spring, 2022**. More than 20 volunteers signed up to collaborate on selecting a use-case as well as architecting and developing an MVP-level portal. The team meets online every other week as well as coordinating over slack ([projectresiliencehq.slack.com](https://projectresiliencehq.slack.com)), and contributions are tracked in our GitHub Account (<https://github.com/orgs/Project-Resilience>). The group is working toward a goal of **launching a first open platform using a climate project as an example - target: 2023/2024**.

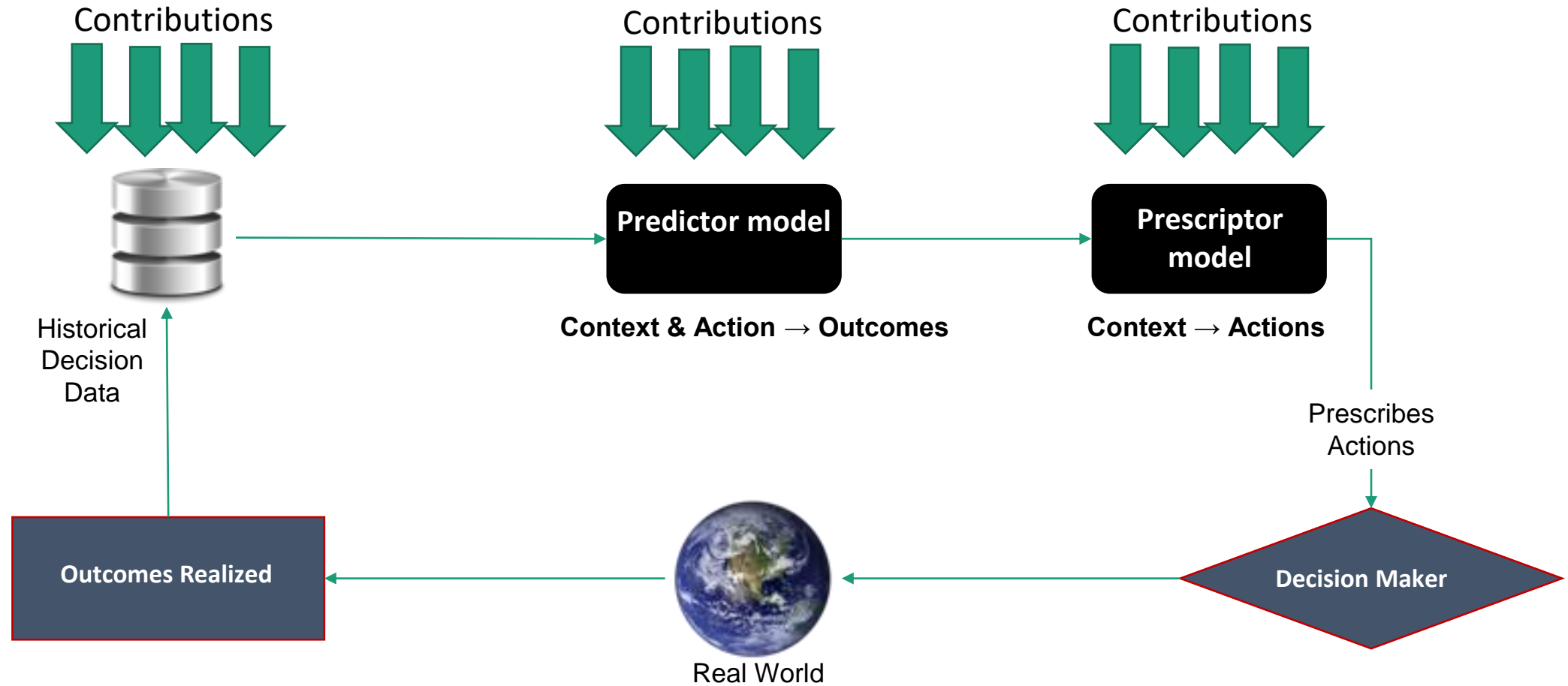
# PLATFORM



PLATFORM OVERVIEW



# AI Contribution Points



# MVP Assumptions



DATA ALREADY EXISTS



DATA IS PUBLIC AND DOES  
NOT HAVE SECURITY/PRIVACY  
CONSTRAINTS



SUBMITTED MODELS ARE  
CALLED AND RUN ON  
SUBMITTER LOCAL COMPUTE



FULL PROCESS OF MODEL  
TRAINING IS DISCLOSED BY  
CONTRIBUTORS

# Project Resilience data exploration

## Data requirements defined



Data should cover variations of decisions sufficiently



Observe the outcome of an action in a reasonable amount of time (e.g., less than 3 months)



Data should include context, actions, outcomes for each observation



Data should come from reliable, trusted, scientific, ethical sources

# Project Resilience Domain example: Climate

## Context

(e.g., geographic and local qualities)

*Region*  
*Population*  
*GDP*  
*Energy usage*  
*Land cover usage*  
*Cost of energy*

## Action

(e.g., transitioning to clean energy)

*Regional plant transitions proposed*  
*Subsidies*  
*Policies*  
*Adaptation actions*

## Outcomes

(e.g., reduce emissions and cost)

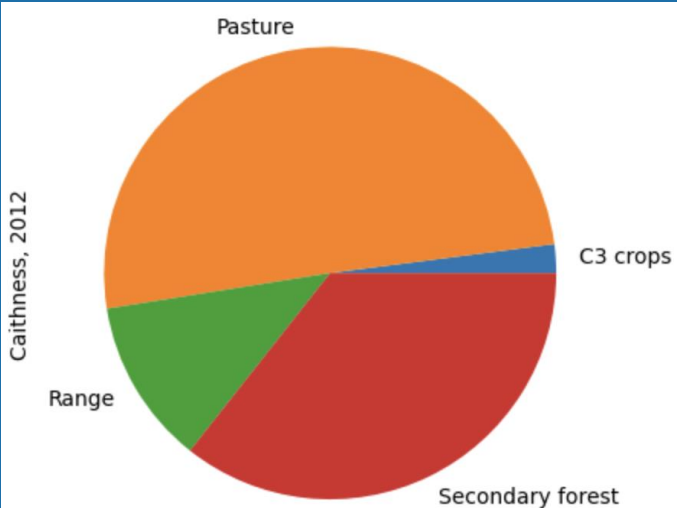
*Emissions (CO<sub>2</sub>, N<sub>2</sub>O, CH<sub>4</sub>, ...)*  
*Energy production*  
*Transition cost*

# Project Resilience data exploration example:

IPCC - Global Carbon Budget - Emissions from Land Use Change

## Context

- *Region*
- *Land cover usage*



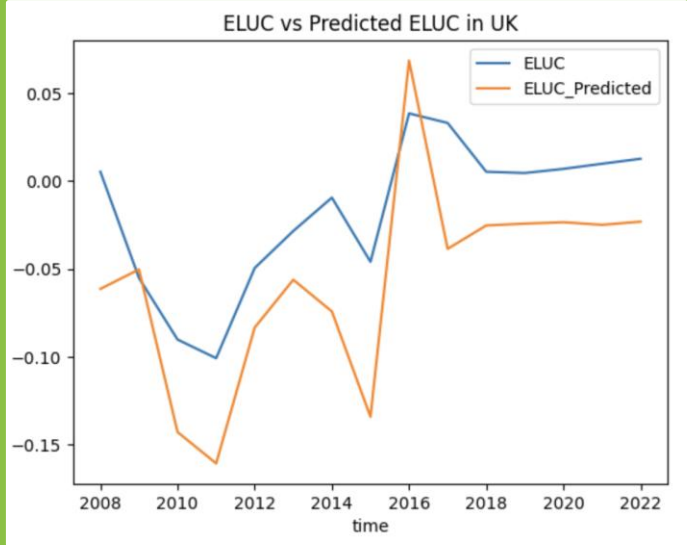
## Actions

- *Land Use Change*

<b>C3 crops diff</b>	0.000283
<b>Pasture diff</b>	-0.003074
<b>Range diff</b>	-0.000801
<b>Secondary forest diff</b>	0.003570
<b>Urban diff</b>	0.000000

## Outcomes

- *CO2 Emissions*
- *Transition cost*

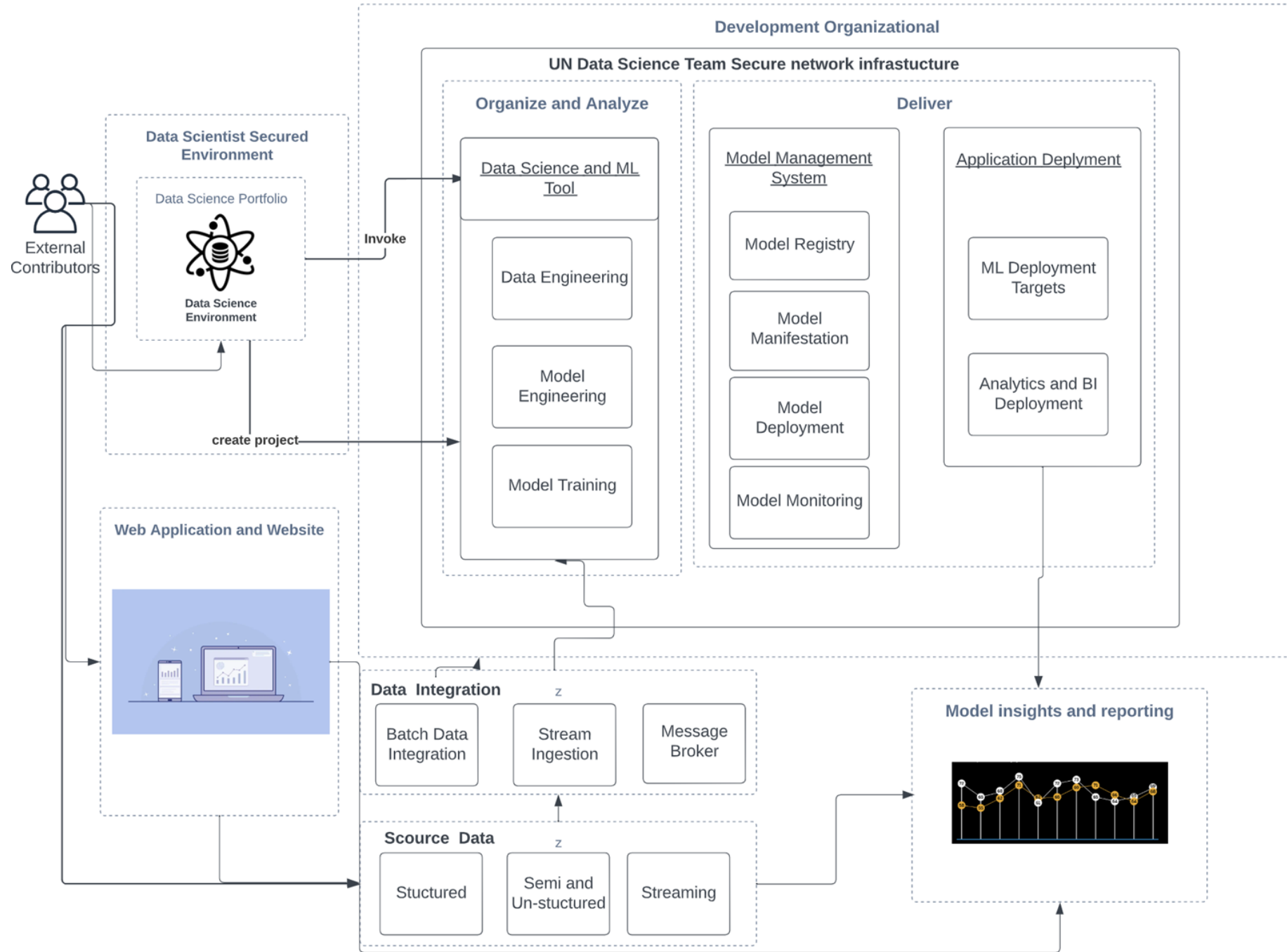


# ARCHITECTURE FOR MVP

## Architecture requirements:

- Component 1 and 7: Secure AI Development Environment for AI community contributors (e.g., AWS Service Catalog)
- Component 2: Data Science Developer IDE (e.g., SageMaker Studio domain)
- Components 3 and 4: MLOps for automated model development and deployment workflow (e.g., SageMaker MLOps project templates)
- Components 5 and 6: Automated quality, governance, and regulations for Models (CI/CD workflows)
- Component 8: Data Store (Secured Data Lake )
- Component 9: Insight analysis (e.g., Amazon QuickSight and Web App)
- Component 10: Bring your Own Model

# Conceptual UN AI/ML Architecture



# Next steps to release MVP

**Ensembling of submitted models** that include predictor models (take context and actions as input, predict outcomes) and prescriptor models (take context as input, prescribe actions optimizing desired balance of outcomes)

**Automated module** to assess and compare models by making calls to models hosted by 3<sup>rd</sup> parties or submitters

**Guidelines for AI Contributors** on data requirements and format (context/action/outcomes column) and lifecycle considerations



# Final Platform

Data scientists and ML experts can submit solutions that comply with certain API standards, maybe in the form of Predictor/Prescriptors



The recommendations of the system can be used globally by anyone and implemented locally

An evaluation testbed is provided to assess and compare submissions quantitatively

Appropriate Data and Funding requirements can be showcased/explained

# Volunteers Needed



Tech program management



AI/ML



Data Science



Dev and System Ops



UI/UX



Legal / Security / Privacy

# Data Contributions Needs

- To identify contributors and their roles (relationships) as data suppliers (sources)
- To evaluate conversion of collected data into publicly available data and/or data sets for predictors
- To get help validate data quality with appropriate KPIs
- To get data clearing house support as a platform to aggregate the data
- To curate data with common data models for shared taxonomy
- To support data features (context/action/ outcomes) and repositories (local storages)
- To support data life cycle management
- To ensure security, privacy, and trust as well as legal compliance including data ownership

Standard opportunity: Data sharing in a standardized way with interoperable interfaces

# Project Outcome expected with LF

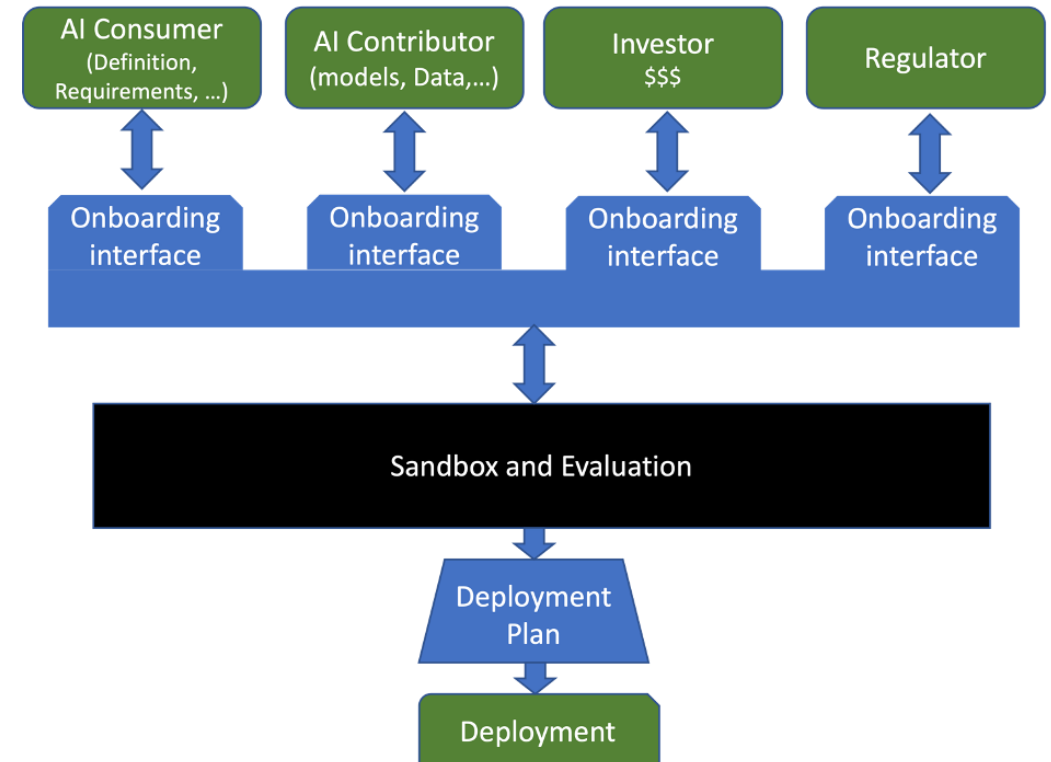
⇒ An open portal + platform to integrate constituents of a collaborative AI decision-augmentation system

- Help decision making authorities and organizations tackling issues such as climate change, ecological disasters, disease control, water management, economic inequity, diversity and inclusion...

⇒ A framework for collaboration on AI predictive and prescriptive models

⇒ Allow for :

- Local Learnings, Data agency, and Model development and deployment in various communities
- All models harnessed into a greater global whole



# Approval of Resilience as a Sandbox Project

## **Proposed Resolution:**

- › Approval of Resilience as a Sandbox project of the LF AI & Data Foundation are hereby approved.

**Thank You!**

**DLF AI & DATA**

# Upcoming TAC Meetings

 **DLF** AI & DATA

# Upcoming TAC Meetings

- › June 1 – AutoML" from Fujitsu, new Sandbox project proposal
- › June 15 – EthicalAI from Fujitsu, new Sandbox project proposal

Please note we are always open to special topics as well.

If you have a topic idea or agenda item, please send agenda topic requests to [tac-general@lists.lfaidata.foundation](mailto:tac-general@lists.lfaidata.foundation)



# Open Discussion

 OLF AI & DATA

# TAC Meeting Details

- › To subscribe to the TAC Group Calendar, visit the wiki:  
<https://wiki.lfaidata.foundation/x/cQB2> \_\_\_\_\_
- › Join from PC, Mac, Linux, iOS or Android: <https://zoom.us/j/430697670>
- › Or iPhone one-tap:
  - › US: +16465588656,,430697670# or +16699006833,,430697670#
- › Or Telephone:
  - › Dial(for higher quality, dial a number based on your current location):
  - › US: +1 646 558 8656 or +1 669 900 6833 or +1 855 880 1246 (Toll Free) or +1 877 369 0926 (Toll Free)
- › Meeting ID: 430 697 670
- › International numbers available: <https://zoom.us/u/achYtcw7uN>

# Legal Notice

- › The Linux Foundation, The Linux Foundation logos, and other marks that may be used herein are owned by The Linux Foundation or its affiliated entities, and are subject to The Linux Foundation's Trademark Usage Policy at <https://www.linuxfoundation.org/trademark-usage>, as may be modified from time to time.
- › Linux is a registered trademark of Linus Torvalds. Please see the Linux Mark Institute's trademark usage page at <https://lmi.linuxfoundation.org> for details regarding use of this trademark.
- › Some marks that may be used herein are owned by projects operating as separately incorporated entities managed by The Linux Foundation, and have their own trademarks, policies and usage guidelines.
- › TWITTER, TWEET, RETWEET and the Twitter logo are trademarks of Twitter, Inc. or its affiliates.
- › Facebook and the "f" logo are trademarks of Facebook or its affiliates.
- › LinkedIn, the LinkedIn logo, the IN logo and InMail are registered trademarks or trademarks of LinkedIn Corporation and its affiliates in the United States and/or other countries.
- › YouTube and the YouTube icon are trademarks of YouTube or its affiliates.
- › All other trademarks are the property of their respective owners. Use of such marks herein does not represent affiliation with or authorization, sponsorship or approval by such owners unless otherwise expressly specified.
- › The Linux Foundation is subject to other policies, including without limitation its Privacy Policy at <https://www.linuxfoundation.org/privacy> and its Antitrust Policy at <https://www.linuxfoundation.org/antitrust-policy>. each as may be modified from time to time. More information about The Linux Foundation's policies is available at <https://www.linuxfoundation.org>.
- › Please email [legal@linuxfoundation.org](mailto:legal@linuxfoundation.org) with any questions about The Linux Foundation's policies or the notices set forth on this slide.